



A division of Skinner AgSolutions, Inc.

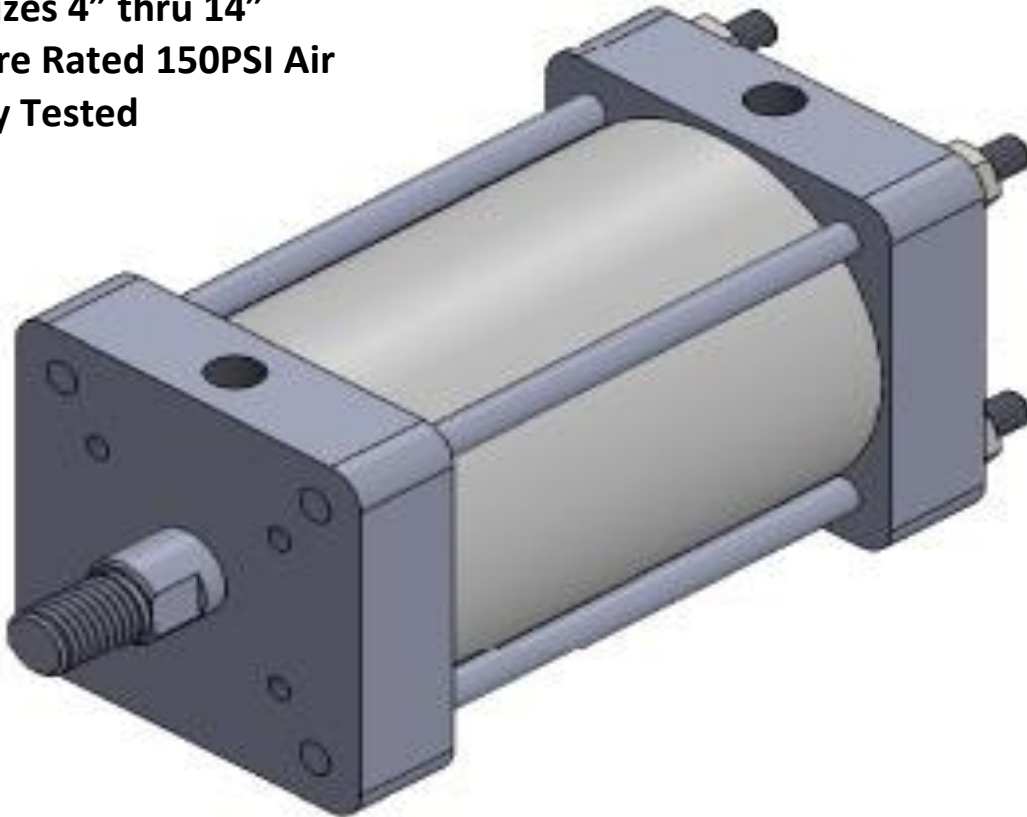
[www.SAValves.us](http://www.SAValves.us)

# KNIFE GATE VALVE CYLINDER

Series KG

Air Cylinder / Valve Actuator

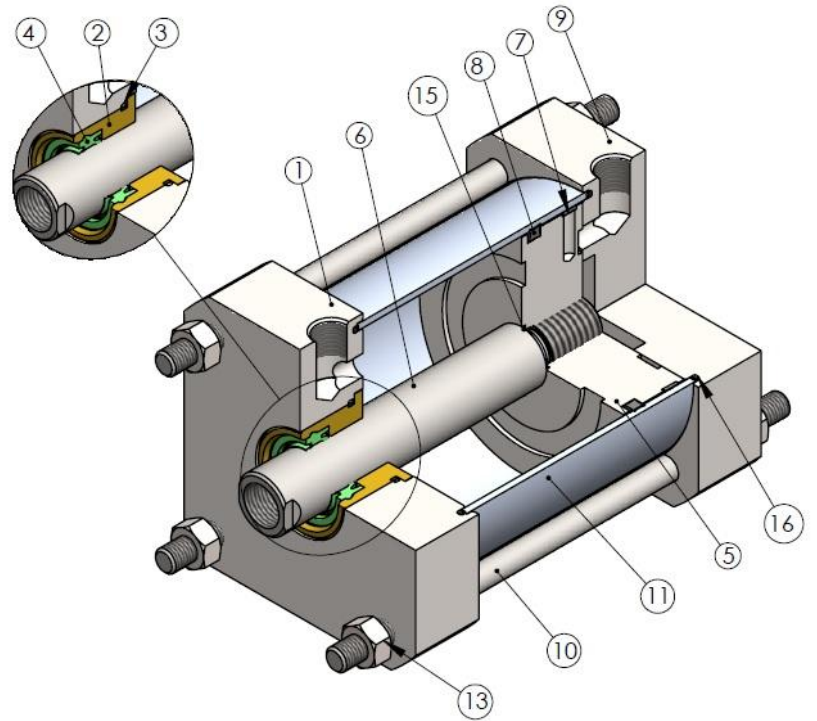
- Bore Sizes 4" thru 14"
- Pressure Rated 150PSI Air
- Factory Tested



## SECTIONAL VIEW OF KG SERIES CYLINDER

ITEM NO.	DESCRIPTION	QTY.
1	FRONT COVER	1
2	BRASS BUSH	1
3	'O' RING *	1
4	ROD CUM WIPER SEAL *	1
5	PISTON	1
6	PISTON ROD	1
7	WEAR STRIP	1
8	QUAD RING *	1
9	REAR COVER	1
10	TIE ROD	4
11	TUBE	1
12	GRUB SCREW	1
13	HEX NUT	8
14	SPRING WASHER	4
15	'O' RING *	1
16	'O' RING *	2

- Seal kit items are indicated by '\*' mark

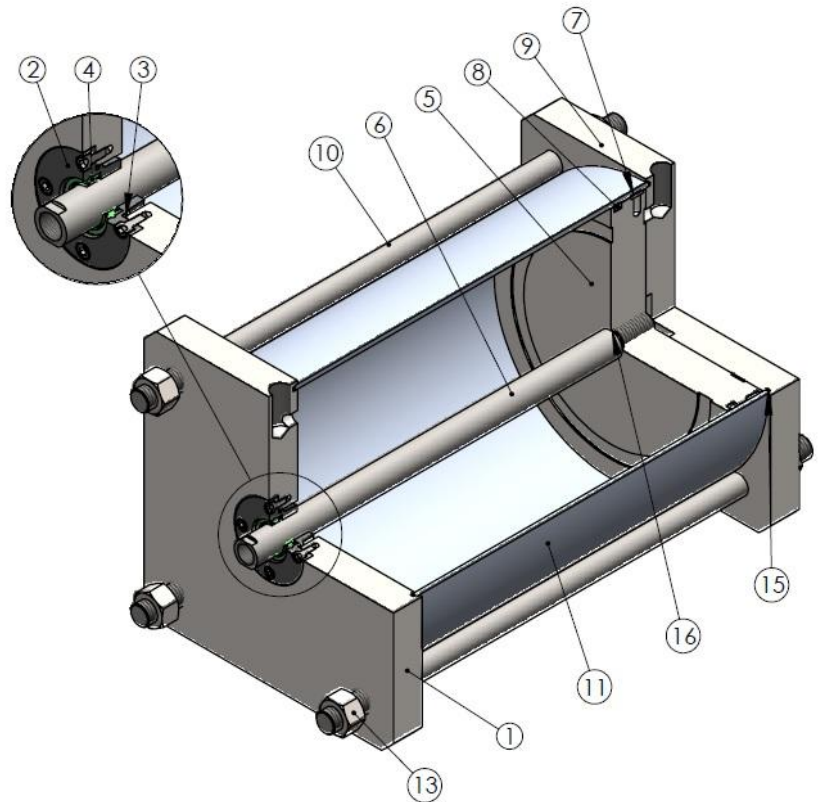


## SECTIONAL VIEW FOR 4" KNIFE GATE CYLINDER

Seal Kit	
For Piston	Item 8 & 15
For Gland Bush	Item 3 & 4
For Covers	Item 16

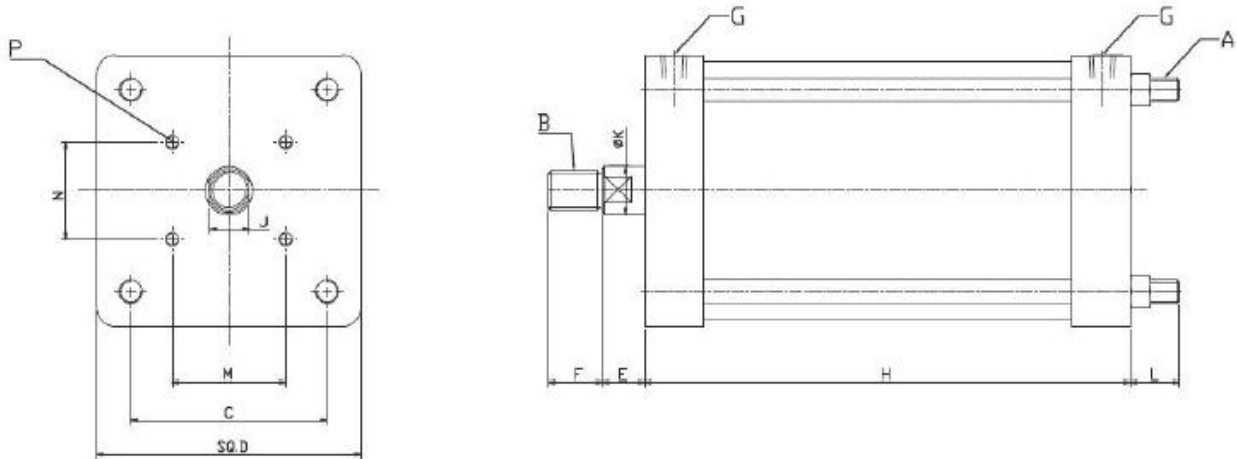
### Torque chart ( Minimum and Maximum)

Bore Size	Tie Rods	
	Diameter	Torque ( Ft-LBS )
4	10	6 to 15
5	12	15 to 30
6	12	15 to 30
8	16	30 to 70
10	20	55 to 110
12	20	70 to 110
14	22	100 to 180



## SECTIONAL VIEW FOR 10" KNIFE GATE CYLINDER

# BASIC CYLINDER DIMENSIONS



Bore	A	B	C	D (Sq.)	E	F	G (NPT)	H	J	K	L	M	N	P
4"	M10	M20 x 1.5P	84	114	22	28.5	3/8"	92+ST	21	25	20	60	50	5/16" UNC 12 DEEP
5"	M12	M20 x 1.5P	104	140	22	28.5	3/8"	92+ST	21	25	25 0	60	50	5/16" UNC 12 DEEP
6"	M12	M20 x 1.5P	124	165	22	28.5	3/8"	92+ST	21	25	25	60	50	5/16" UNC 12 DEEP
8"	M16	M20 x 1.5P	164	216	22	28.5	3/8"	92+ST	21	25	30	60	50	5/16" UNC 12 DEEP
10"	M20	M20 x 1.5P	220	270	25	28.5	1/2"	106+ST	21	25	40	80	80	5/16" UNC 12 DEEP
12"	M20	M36 x 2P	239	324	25	28.5	1/2"	106+ST	36	40	40	100	100	5/16" UNC 12 DEEP
14"	M22	M36 x 2P	277	375	25	28.5	1/2"	106+ST	36	40	40	100	100	5/16" UNC 12 DEEP

Note: All dimensions are in mm except wherein specified. May vary depending on customer requirement.